

Mainstreaming Participatory Budgeting

Simon Cameron, Development Manager – Participatory Budgeting
Convention of Scottish Local Authorities

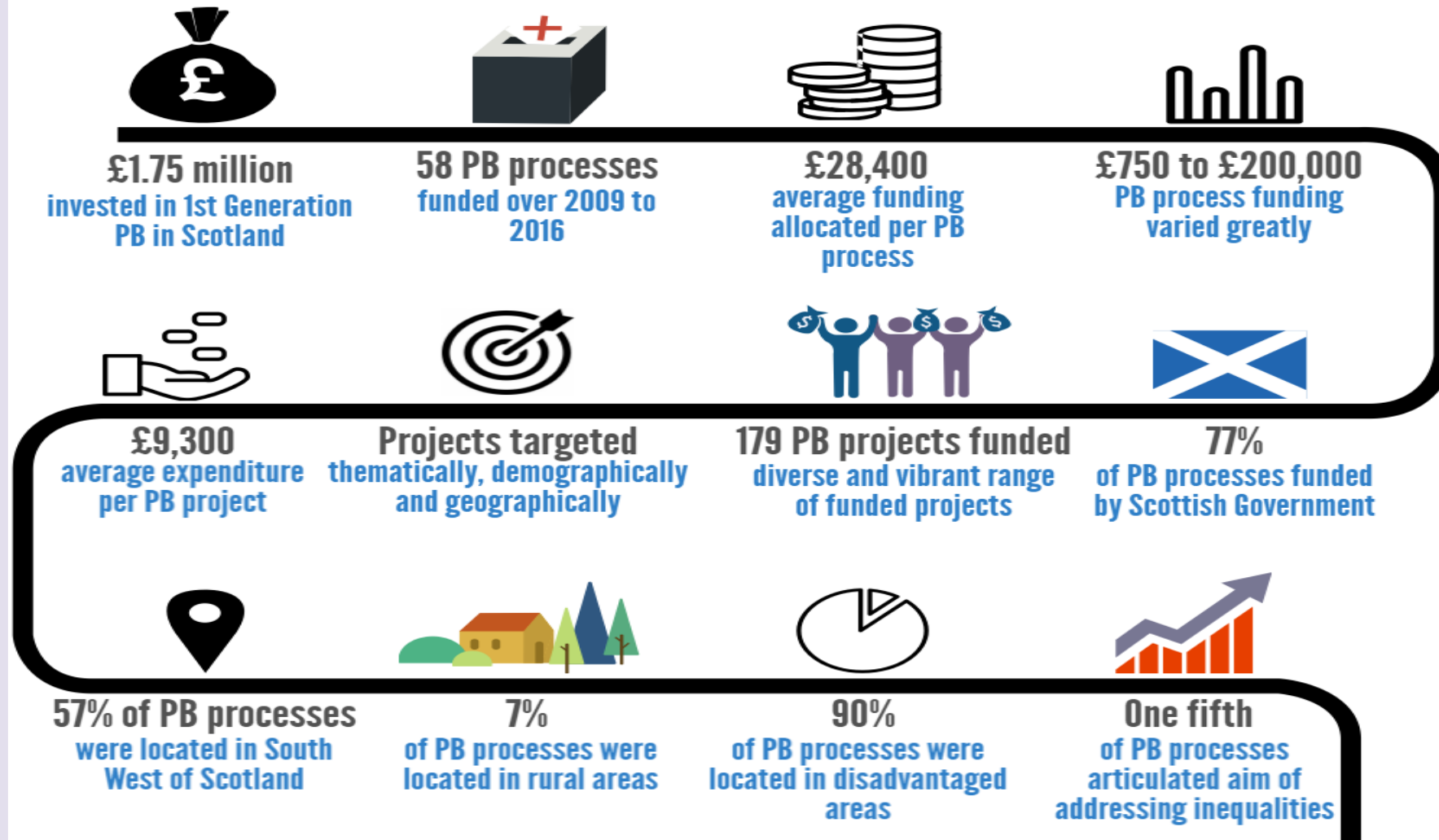
The Scottish PB journey

- Where PB fits
- Where we were
- Where we are
- Where we're going
- Where next

Where PB fits

- A mechanism for community engagement
- A resource to build on the wider development of participatory democracy in Scotland.
- Supports Public Service Reform, that people should have equal opportunity to participate and have their voice heard in decisions shaping their local community and society.
- Complements aspirations for the Community Empowerment (Scotland) Act 2015 which will help give communities more powers to take forward their own ambitions.

Where we were:



Please note: all data presented in this info-graphic are estimates only, and based on incomplete information. Please see the Review Findings section of this report for details of missing data.

Where we are:

£1.7m Community Choices Fund 16/17



19,017
People At
Events



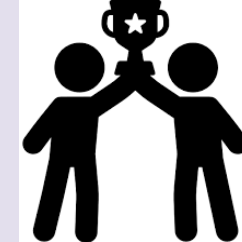
39,484 Voters



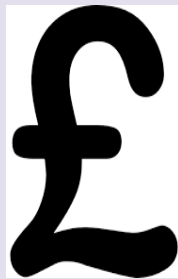
122 Events



2,058
Projects
Voted On



1,349
Projects
Successful



£2,511,438 Distributed
through Community
Choices to Projects
throughout Scotland

Where we're going:

£100 million by 2021

1% agreement October 2017

Scottish Government and COSLA agree that *at least* 1% of local government budgets will be subject to participatory budgeting by the end of 2021.

Definition of Community Choices

‘Community Choices budgeting supports a democratic and engaged citizenship by enabling local people to have a direct say in how a defined public budget can be used to address their priorities.

It is one method of community engagement that can be used alongside other models of empowerment as part of a wider approach to advancing participatory democracy.’

Key Points of Commitment

- 1% is the minimum target set
- can be revenue and/or capital expenditure
- defined as total estimated expenditure for revenue, as per the local government finance circular
- Less council tax intake –a local tax already directly and locally accountable.
- **for local authorities to decide how to take forward at a local level**

Key Points of Commitment

- Target timescale is 2020/21
- COSLA provide an annual global figure to SG
- Framework Document:

<http://www.cosla.gov.uk/community-choices-1-framework-agreement>

Evaluation

Impact so far?

- Communities
- Services
- Democracy
- Tackling inequality



Where next?

- Define mainstream PB
- Be clear on opportunities and challenges
- Embed as part of how we work
- Ensure it is a wider public and third sector endeavour

Questions and answers

Contacts

simonc@cosla.gov.uk

Development Manager, Participatory Budgeting

Tel: 0131 474 9261

Kathleen.Glazik@gov.scot

Policy Manager, Community Empowerment Team

Tel: 0131 244 0831

Participatory Budgeting Website

www.PBScotland.scot